



Civic Duty

About

Guided by the latest insights from our community task force partnership initiative and guiding principles and theory from the Confederation of School Trust's *Community Anchoring – School Trusts as Anchor Institutions* whitepaper, PACT has developed its Civic Duty Framework to set our strategic objective and direct tactical management of targeted interventions and activity which embeds the Trust as an anchor institution within its community. Collaboration today. Mobilising the communities of tomorrow.

All of our activity in this space is delivered through two core pillars:

1. Collaboration and accountability
2. Civic purpose and wider common good

CEO Introduction – Launch of Phase Two: Civic Duty Framework (2025–2028)



PACT's initial Civic Duty Framework was launched in 2023 and set solid foundations for the Trust and its communities to enable a seamless transition into the Trust's next chapter. I am therefore proud to introduce Phase Two of our Civic Duty Framework (2025–2028)—a vital companion to our newly adopted three-year strategic plan, EMPOWER 2028. At the heart of both is a deep commitment to building stronger, fairer, and more sustainable communities for the young people and families we serve. We know that exceptional education cannot happen in isolation. It is rooted in the strength of our communities—built on a sustainable model of trust, collaboration, and shared responsibility. We remain steadfast in the belief that it takes a collective effort to raise a child. Our community is cosmopolitan and inclusive: our students and staff, of course, but also families, local partners, civic leaders, and educational allies. Each plays an irreplaceable role in shaping a future where every child can thrive.

As we advance into this new phase, our Civic Duty Framework will focus on three interlinked priorities:

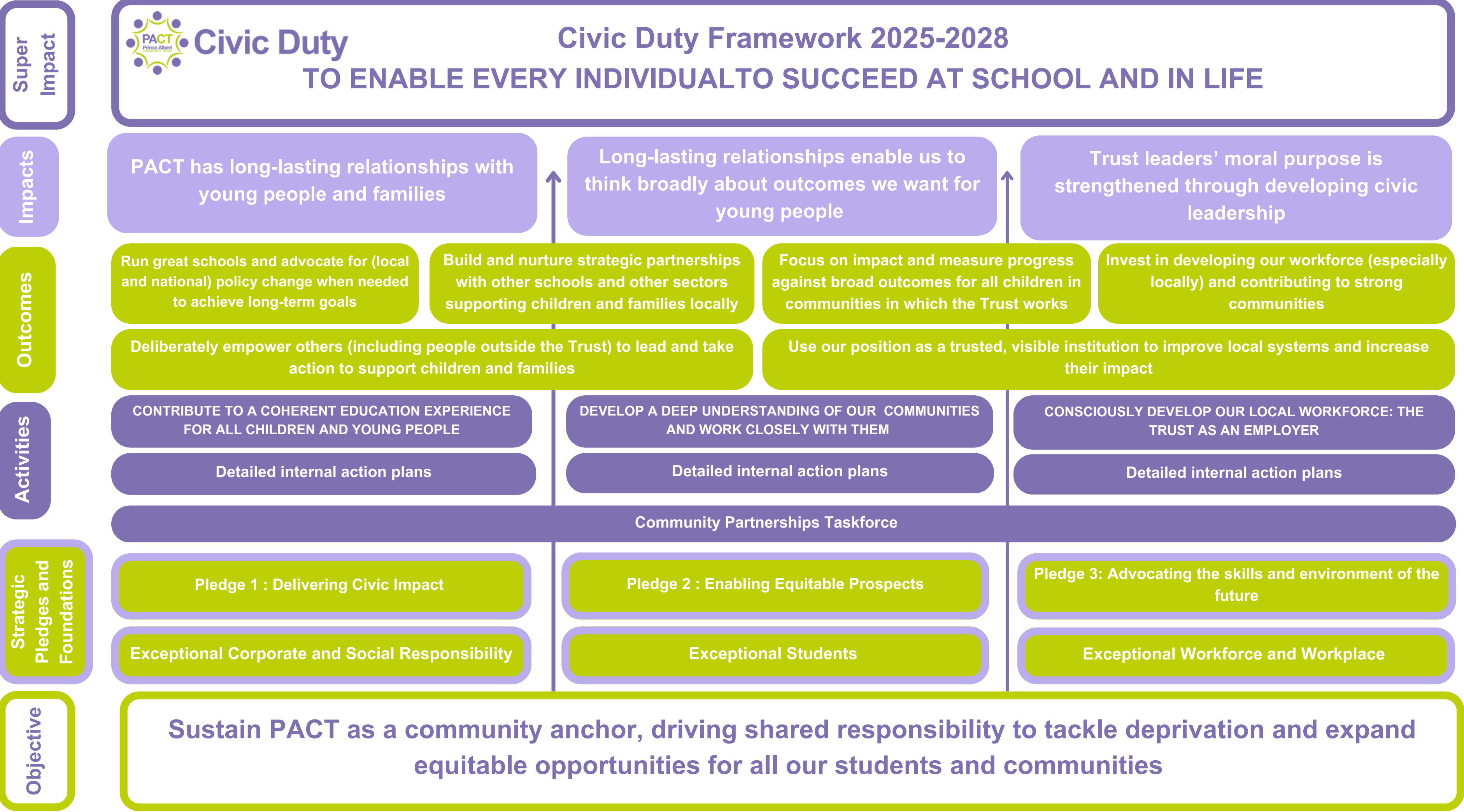
- ▶ A sustained and sharpened focus on reducing poverty – recognising that educational equity begins with addressing the socio-economic barriers that limit opportunity and aspiration.
- ▶ A reimagined commitment to systems change that places the 'whole child' at the centre – advocating for policy and political conditions that prioritise wellbeing, inclusion, and long-term development, not just academic outcomes.
- ▶ Embedding sustainability in all that we do – ensuring that the decisions we make today are not only responsible but regenerative, preparing young people to lead in a world that urgently needs ethical, environmentally aware citizens.

Engaging parents and caregivers will remain a cornerstone of our approach. Their insight, resilience, and lived experience are powerful assets in shaping a more inclusive and responsive educational environment. Open, respectful dialogue will continue to connect our schools to the lives and hopes of our families.

We also continue to expand our civic partnerships, not least through initiatives like our Community Task Force, which brings together local organisations to inspire, support, and raise aspirations for our young people. These partnerships are key to ensuring that what we offer in our classrooms is enriched by the real-world expertise and opportunities our communities provide. Together, we are building a Trust that is more than the sum of its parts—one that listens deeply, acts boldly, and leads with purpose. As we look ahead to 2028, I am excited about the shared journey before us, and deeply grateful for the role each of you plays in shaping it.

Let's continue to empower, together.

Phillipa Sherlock-Lewis, CEO



Phase Two Priorities

Preventative Poverty Strategies

Ensures that civic duty efforts target the root causes of hardship rather than relying solely on reactive measures. By intervening early, we build individual and community resilience, reduce inequality, ultimately creating fairer access to education, employment, housing, and health. Preventative approaches also deliver better value for money, alleviating future costs associated with crisis responses such as homelessness and poor health outcomes. Most importantly, this pillar strengthens social cohesion and reflects our shared responsibility to act early, uphold dignity, and enable opportunity for all.

Purposeful Policy and Politics

Ensures that civic duty is underpinned by clear, accountable, and values-driven decision-making. This pillar prioritises evidence-based policy, transparent governance, and inclusive political engagement to build trust and legitimacy. By aligning policies with long-term societal wellbeing rather than short-term gains, it strengthens the capacity of PACT schools as community institutions to deliver fairness, equity, and opportunity. Influencing purposeful national policy also fosters collaboration across sectors, amplifying civic voices and ensuring that solutions are responsive to real needs. Ultimately, this pillar reinforces the principle that effective governance is a shared responsibility, central to driving sustainable and just outcomes.

Progressive Sustainability

Ensures that our civic duty framework balances immediate needs with long-term resilience. By embedding sustainability into social, economic, and environmental systems, we aim to protect resources for future generations while addressing today's challenges. This pillar promotes fair access to green opportunities, reduces inequalities linked to climate and economic transition, and drives innovation in sustainable living. Above all, this pillar reflects our collective responsibility to create a fairer future that benefits everyone.

Collaboration and accountability

Civic purpose and wider common good



Community Partnership Taskforce and Events

OUTCOME 2: Sustain PACT as an anchor institution within our communities, driving systematic change nationally



Civic Duty



Get Involved,
Find out
more



communityevents@the-pact.co.uk



[Community Events Calendar](#)